

From: [Conners, Rohen](#)
To: [Santosuosso, Daniel](#)
Subject: Molonglo Group Centre & Surrounds - EDU base map alteration request
Date: Monday, 11 April 2022 1:40:00 PM
Attachments: [EDU_request MGC A3.pdf](#)

OFFICIAL

Hi Dan,

Thanks for sending through the base maps for Education's planning use. We have been using the black & white orthophotomap, however there are a few challenges using it, particularly its smallish scale vis-à-vis for site planning + integration into the group centre. Also the orthophoto base is not aligned with the topographic/MGC plan above (NB Coombs, Denman, JG Drive, River etc).

Could I please get a an A3 landscape extracted from the map at a much larger scale? The attached map shows the Denman 3/Group Centre focus area bounded by 3 blue lines (East/west/north). The proposed new western boundary is 750m (current scale) inside, and the eastern is 300m inside. The southern map cut off can fall where it falls for a undistorted map that fits tight into the left/right side margins.

A few other requests:

- It would be good if the topographic contours and various planned cadastre boundaries could remain at the same point-size/'thinness'
- It may be clearer to provide EDU feedback in red – can the road reservations & land use boundaries be, say, a mid blue?
- As a reference & communication 'source of truth' between us, could centrelines (contour thin) be provided for John Gorton Drive (for east/west referencing) and Holborrow/East/west arterial (for north/south referencing)?
- Could the new scale be a simple line one with ticks at 0, 5m, 10m, 20m, 30m, 40m, 50m, 75m, 100, (then 50m intervals after)?
- The yellow projecting line on the attached map is the centreline of the proposed bus interchange (road) axis that runs from the Denman 3 primary school eastern boundary to the 7-12 campus (for which it will quite likely be its northern boundary now). Could this road centreline be moved 13/14m north please (it will make the southern blocks adjoining John Gorton the same length as the ones above, slightly offset abandoning site area to the north)?
- The green line is the green link/town centre park summit axis. If this road centreline is moved 3 metres south (not much I know!) the northern block (on east side) will be the same length as the other ones referred to above AND the axis will align closer to the summit.

Happy to discuss,

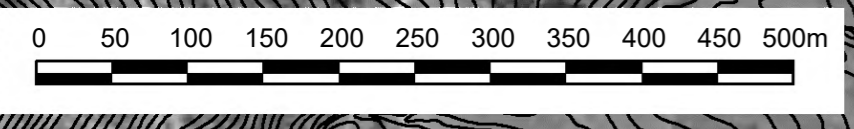
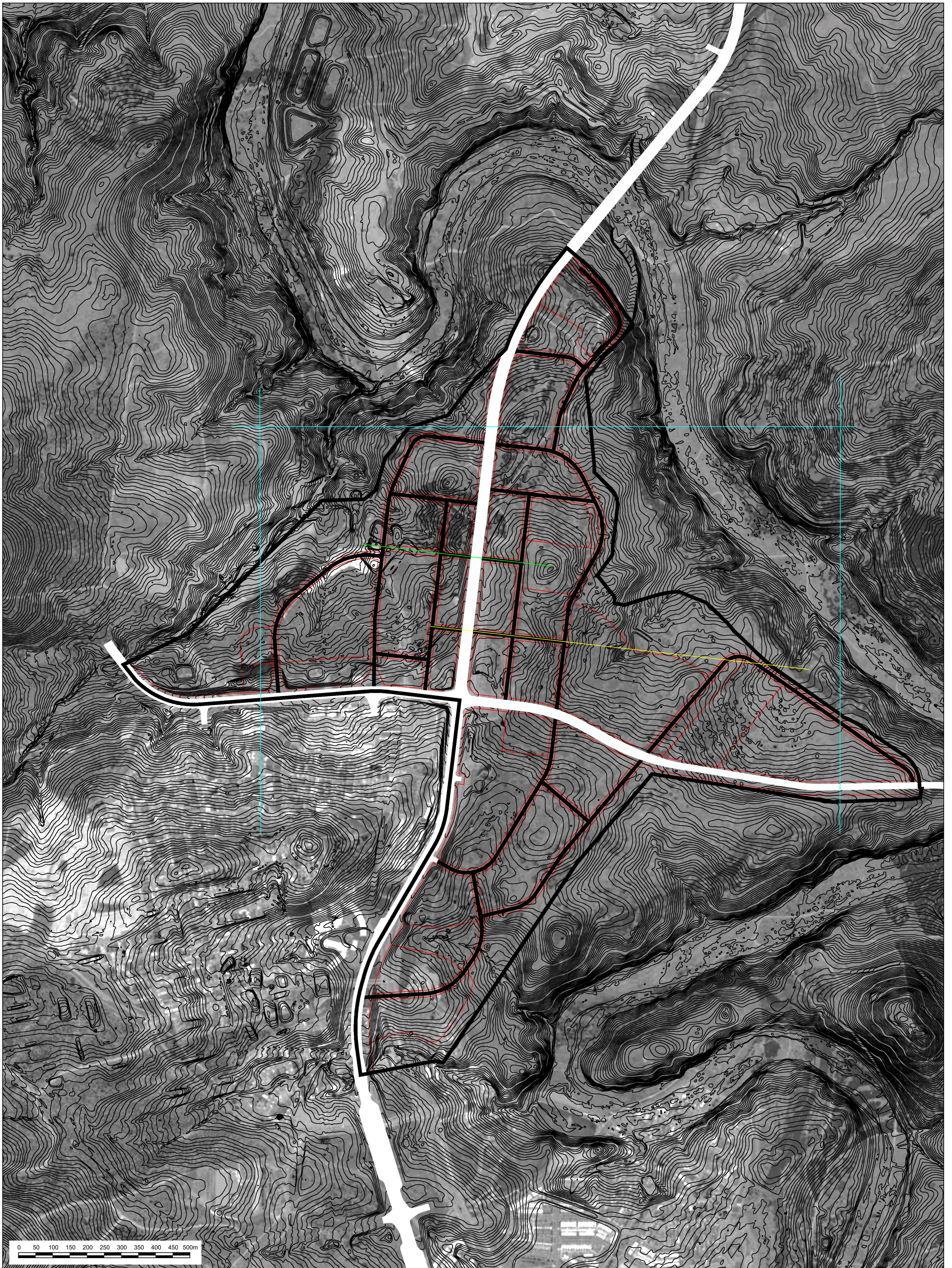
Cheers
Rohen

Rohen Conners | Director, Schools Planning

02 6207 1654 | rohen.conners@act.gov.au

Enrolments and Planning | System Policy and Reform | Education Directorate

www.education.act.gov.au | [Facebook](#) | [Twitter](#) | [Instagram](#) | [LinkedIn](#) | [Google+](#)



From: [Santosuosso, Daniel](#)
To: [Conners, Rohen](#)
Subject: RE: Molonglo Group Centre & Surrounds - EDU base map alteration request
Date: Monday, 11 April 2022 1:53:00 PM
Attachments: [image001.gif](#)
[image002.gif](#)

Hi Rohen,

Sorry about the Plan, I will have it corrected for you and resent to the specs below

Kind Regards

Daniel Santosuosso | Project Director

Phone: 02 6207 7212 | Email: daniel.santosuosso@act.gov.au

Development and Implementation | Environment, Planning and Sustainable Development Directorate | ACT Government

480 Northbourne Avenue | GPO Box 158 Canberra ACT 2601 | www.planning.act.gov.au

***I'm currently working remotely and can be contacted by email, phone, MS Teams or Webex**



This message is intended for the recipient's use only. It may contain confidential and legally privileged information. If you receive this document in error, you must not use or disclose it or its contents. If you are not the intended recipient please contact the sender and dispose of the message.

From: Conners, Rohen <Rohen.Conners@act.gov.au>

Sent: Monday, 11 April 2022 1:41 PM

To: Santosuosso, Daniel <Daniel.Santosuosso@act.gov.au>

Subject: Molonglo Group Centre & Surrounds - EDU base map alteration request

OFFICIAL

Hi Dan,

Thanks for sending through the base maps for Education's planning use. We have been using the black & white orthophotomap, however there are a few challenges using it, particularly its smallish scale vis-à-vis for site planning + integration into the group centre. Also the orthophoto base is not aligned with the topographic/MGC plan above (NB Coombs, Denman, JG Drive, River etc).

Could I please get a an A3 landscape extracted from the map at a much larger scale? The attached map shows the Denman 3/Group Centre focus area bounded by 3 blue lines (East/west/north). The proposed new western boundary is 750m (current scale) inside, and the eastern is 300m inside. The southern map cut off can fall where it falls for a undistorted map that fits tight into the left/right side margins.

A few other requests:

- It would be good if the topographic contours and various planned cadastre boundaries could remain at the same point-size/'thinness'
- It may be clearer to provide EDU feedback in red – can the road reservations & land use boundaries be, say, a mid blue?
- As a reference & communication 'source of truth' between us, could centrelines (contour thin) be provided for John Gorton Drive (for east/west referencing) and Holborrow/East/west arterial (for north/south referencing)?
- Could the new scale be a simple line one with ticks at 0, 5m, 10m, 20m, 30m, 40m, 50m, 75m, 100, (then 50m intervals after)?
- The yellow projecting line on the attached map is the centreline of the proposed bus interchange (road) axis that runs from the Denman 3 primary school eastern boundary to the 7-12 campus (for which it will quite likely be its northern boundary now). Could this road centreline be moved 13/14m north please (it will make the southern blocks adjoining John Gorton the same length as the ones above, slightly offset abandoning site area to the

north)?

- The green line is the green link/town centre park summit axis. If this road centreline is moved 3 metres south (not much I know!) the northern block (on east side) will be the same length as the other ones referred to above AND the axis will align closer to the summit.

Happy to discuss,

Cheers

Rohen

Rohen Conners | Director, Schools Planning

02 6207 1654 | rohen.conners@act.gov.au

Enrolments and Planning | System Policy and Reform | Education Directorate

www.education.act.gov.au | [Facebook](#) | [Twitter](#) | [Instagram](#) | [LinkedIn](#) | [Google+](#)

From: [Santosuosso, Daniel](#)
To: [Conners, Rohen](#)
Subject: FW: Molonglo Group Centre & Surrounds - EDU base map alteration request
Date: Tuesday, 12 April 2022 10:15:00 AM
Attachments: [P02203 MGC B&W Aerial and MGCBoundary 11.04.2022 FIG1.pdf](#)
[P02203 MGC B&W Aerial and MGCBoundary 11.04.2022 FIG2.pdf](#)
[image001.gif](#)
[image002.gif](#)

Hi Rohen,

I had Edwin make the quick changes for you so I could get it back to you. I have not realigned any roads yet. Please find attached a zoomed in version as well as the original scale.

Kind Regards

Daniel Santosuosso | Project Director

Phone: 02 6207 7212 | Email: daniel.santosuosso@act.gov.au

Development and Implementation | Environment, Planning and Sustainable Development Directorate | ACT Government

480 Northbourne Avenue | GPO Box 158 Canberra ACT 2601 | www.planning.act.gov.au

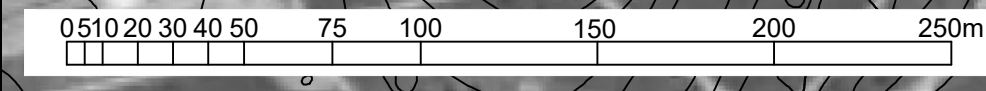
***I'm currently working remotely and can be contacted by email, phone, MS Teams or Webex**



This message is intended for the recipient's use only. It may contain confidential and legally privileged information. If you receive this document in error, you must not use or disclose it or its contents. If you are not the intended recipient please contact the sender and dispose of the message.



0 50 100 150 200 250 300 350 400 450 500m



From: [Conners, Rohen](#)
To: [Santosuosso, Daniel](#)
Subject: RE: Molonglo Group Centre & Surrounds - EDU base map alteration request
Date: Tuesday, 12 April 2022 10:49:37 AM
Attachments: [image001.gif](#)
[image002.gif](#)

OFFICIAL

An unbroken thin line down the middle of the carriageways is fine. They bisect at 90 degrees and determine the orientation of the Molonglo Group Centre and surrounds grid, so are perfect for reference.

Rohen Conners | Director, Schools Planning

02 6207 1654 | rohen.conners@act.gov.au

Enrolments and Planning | System Policy and Reform | Education Directorate

www.education.act.gov.au | [Facebook](#) | [Twitter](#) | [Instagram](#) | [LinkedIn](#) | [Google+](#)

From: Santosuosso, Daniel <Daniel.Santosuosso@act.gov.au>

Sent: Tuesday, 12 April 2022 10:40 AM

To: Conners, Rohen <Rohen.Conners@act.gov.au>

Subject: RE: Molonglo Group Centre & Surrounds - EDU base map alteration request

Will get Edwin to add a thin dotted line in the middle of JGD and EWA road reserves?

Daniel Santosuosso | Project Director

Phone: 02 6207 7212 | Email: daniel.santosuosso@act.gov.au

Development and Implementation | **Environment, Planning and Sustainable Development Directorate** | **ACT Government**

480 Northbourne Avenue | GPO Box 158 Canberra ACT 2601 | www.planning.act.gov.au

***I'm currently working remotely and can be contacted by email, phone, MS Teams or Webex**



This message is intended for the recipient's use only. It may contain confidential and legally privileged information. If you receive this document in error, you must not use or disclose it or its contents. If you are not the intended recipient please contact the sender and dispose of the message.

From: Conners, Rohen <Rohen.Conners@act.gov.au>

Sent: Tuesday, 12 April 2022 10:36 AM

To: Santosuosso, Daniel <Daniel.Santosuosso@act.gov.au>

Subject: RE: Molonglo Group Centre & Surrounds - EDU base map alteration request

OFFICIAL

Thanks Dan, that is great.

Just one thing – could we have those carriageway (thin) centrelines for John Gorton Drive and Holborrow/East-west arterial. Having those centrelines provides X axis and Y axis reference points for communicating with yourself and later SLA.

Cheers

Ro

Rohen Conners | Director, Schools Planning

02 6207 1654 | rohen.conners@act.gov.au

Enrolments and Planning | System Policy and Reform | Education Directorate

www.education.act.gov.au | [Facebook](#) | [Twitter](#) | [Instagram](#) | [LinkedIn](#) | [Google+](#)

From: Santosuosso, Daniel <Daniel.Santosuosso@act.gov.au>

Sent: Tuesday, 12 April 2022 10:16 AM

To: Conners, Rohen <Rohen.Conners@act.gov.au>

Subject: FW: Molonglo Group Centre & Surrounds - EDU base map alteration request

Hi Rohen,

I had Edwin make the quick changes for you so I could get it back to you. I have not realigned any

roads yet. Please find attached a zoomed in version as well as the original scale.

Kind Regards

Daniel Santosuosso | Project Director

Phone: 02 6207 7212 | Email: daniel.santosuosso@act.gov.au

Development and Implementation | Environment, Planning and Sustainable Development Directorate | ACT Government

480 Northbourne Avenue | GPO Box 158 Canberra ACT 2601 | www.planning.act.gov.au

***I'm currently working remotely and can be contacted by email, phone, MS Teams or Webex**



This message is intended for the recipient's use only. It may contain confidential and legally privileged information. If you receive this document in error, you must not use or disclose it or its contents. If you are not the intended recipient please contact the sender and dispose of the message.